



PUBLIC INSIGHT®

# Labor Market Report

REPORTED AS OF: September 10, 2021

# BLS Job Openings and Labor Turnover Survey (JOLTS) - Openings and New Hires

The [Job Openings and Labor Turnover Survey](#) (JOLTS) measures market supply and demand as updated monthly. **Job openings** are based on a three factor test applied and to be classified as a job opening requires meeting all of these tests. **Job hires** include any additions to the payroll during the entire reference month. This includes the items listed. Most notable among exclusions are any transfers or promotions from the same location. Promotions or transfers from other locations can be included.

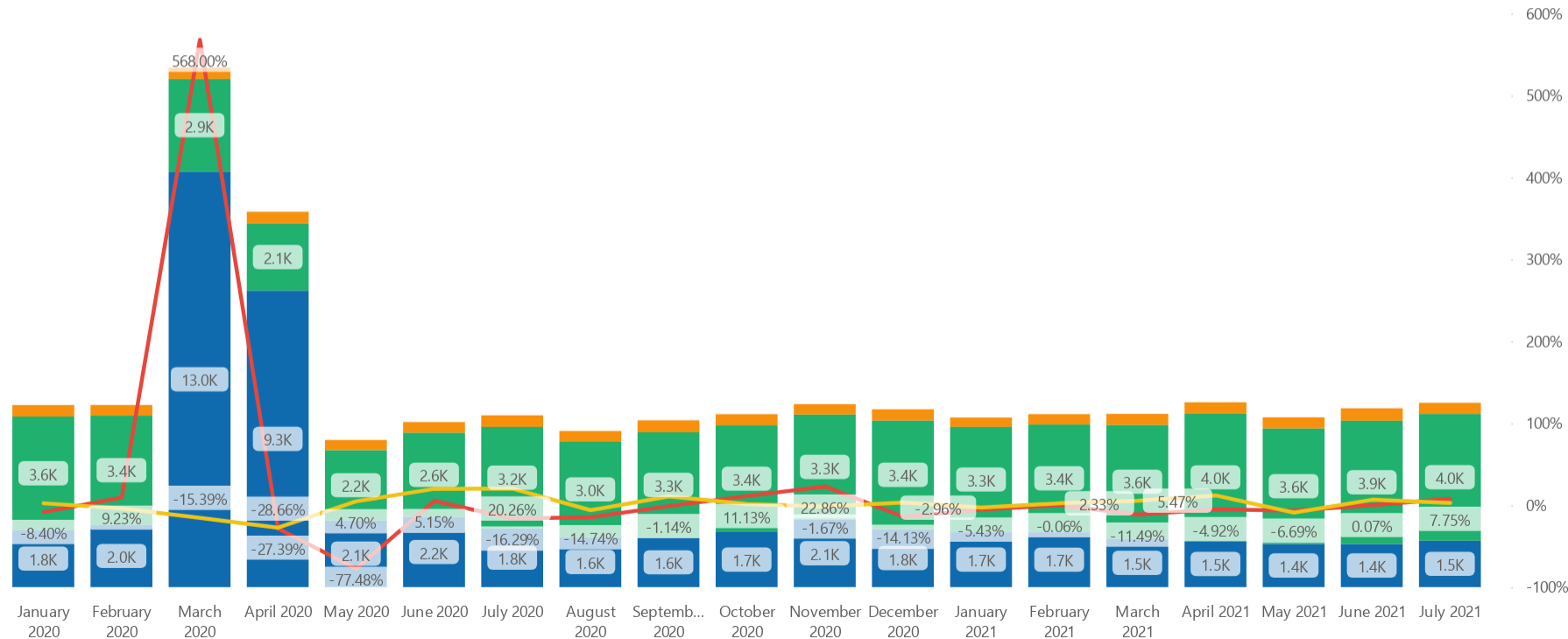
## National Job Openings and Hires (Total Nonfarm All Regions and Employment Sizes)



# BLS Job Openings and Labor Turnover Survey (JOLTS) - Layoffs, Separations, and Discharges

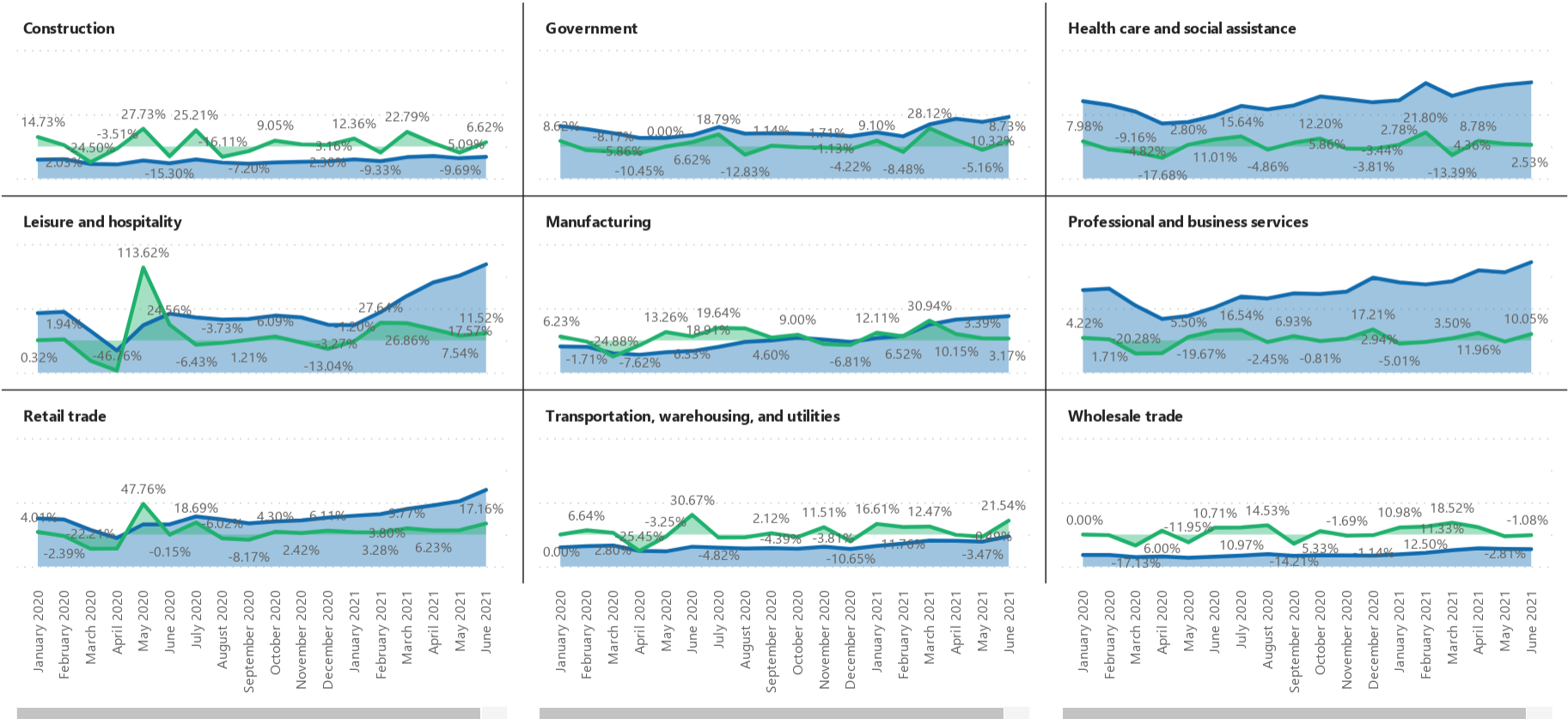
The [Job Openings and Labor Turnover Survey](#) (JOLTS) measures market supply and demand as updated monthly. **Separations** consist of Quits, Layoffs and Discharges, and Other Separations. Collectively this comprises the total separations. The primary difference between quits and layoffs is who initiates the separation. Layoffs can occur for many reasons. A key factor for a temporary layoff is whether it is expected to last beyond 7 days.

● Layoffs and Discharges ● Quits ● Other Separations ● Layoffs and Discharges MoM% ● Quits MoM%



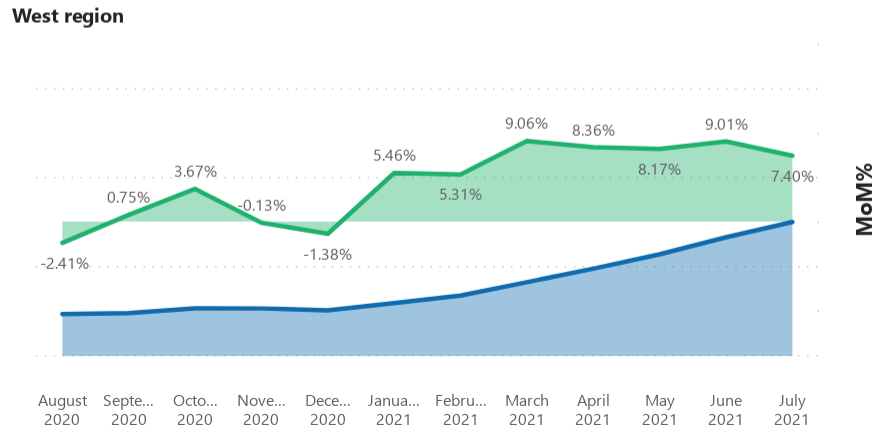
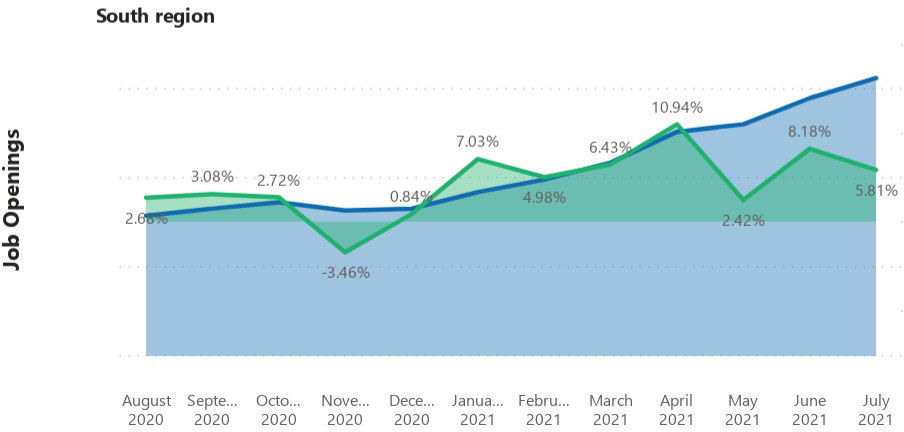
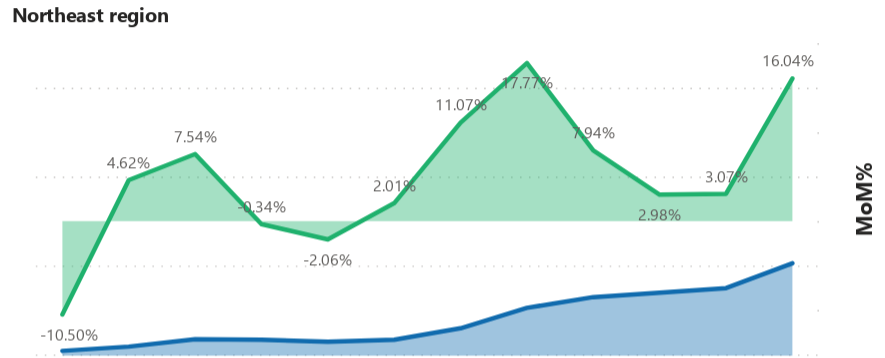
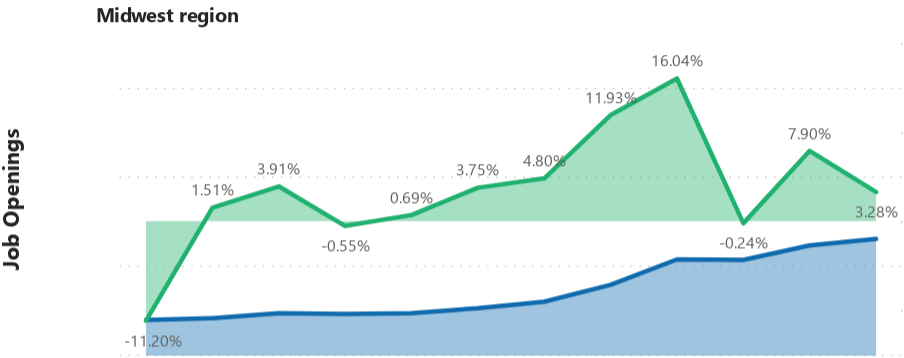
# BLS JOLTS Job Openings by Industry

● Job Openings ● MoM%



# BLS JOLTS Job Openings by Region

● Job Openings ● MoM%

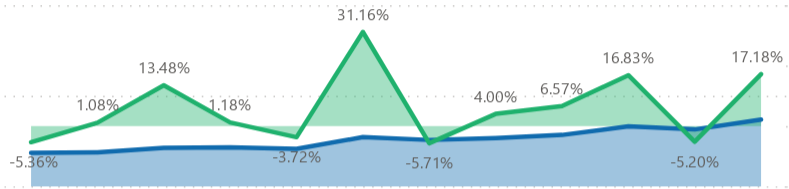


# BLS JOLTS Job Openings by Establishment Size

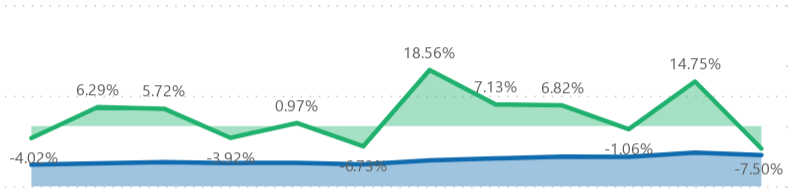
● Job Openings ● MoM%

Job Openings

1 to 9 employees



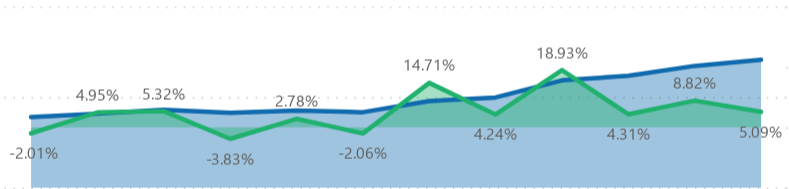
1,000 to 4,999 employees



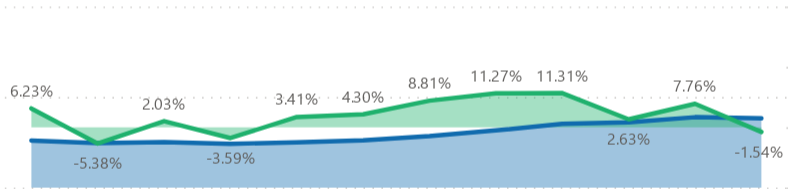
MoM%

Job Openings

10 to 49 employees



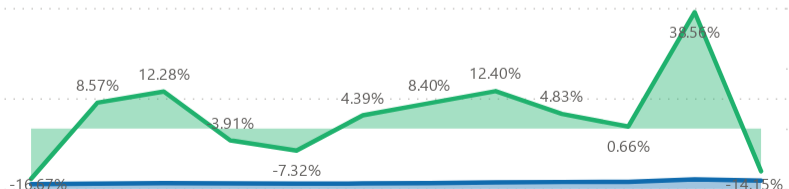
250 to 999 employees



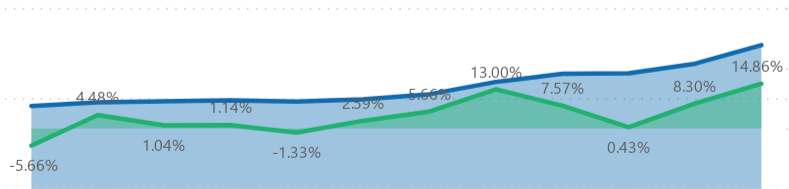
MoM%

Job Openings

5,000 or more employees



50 to 249 employees



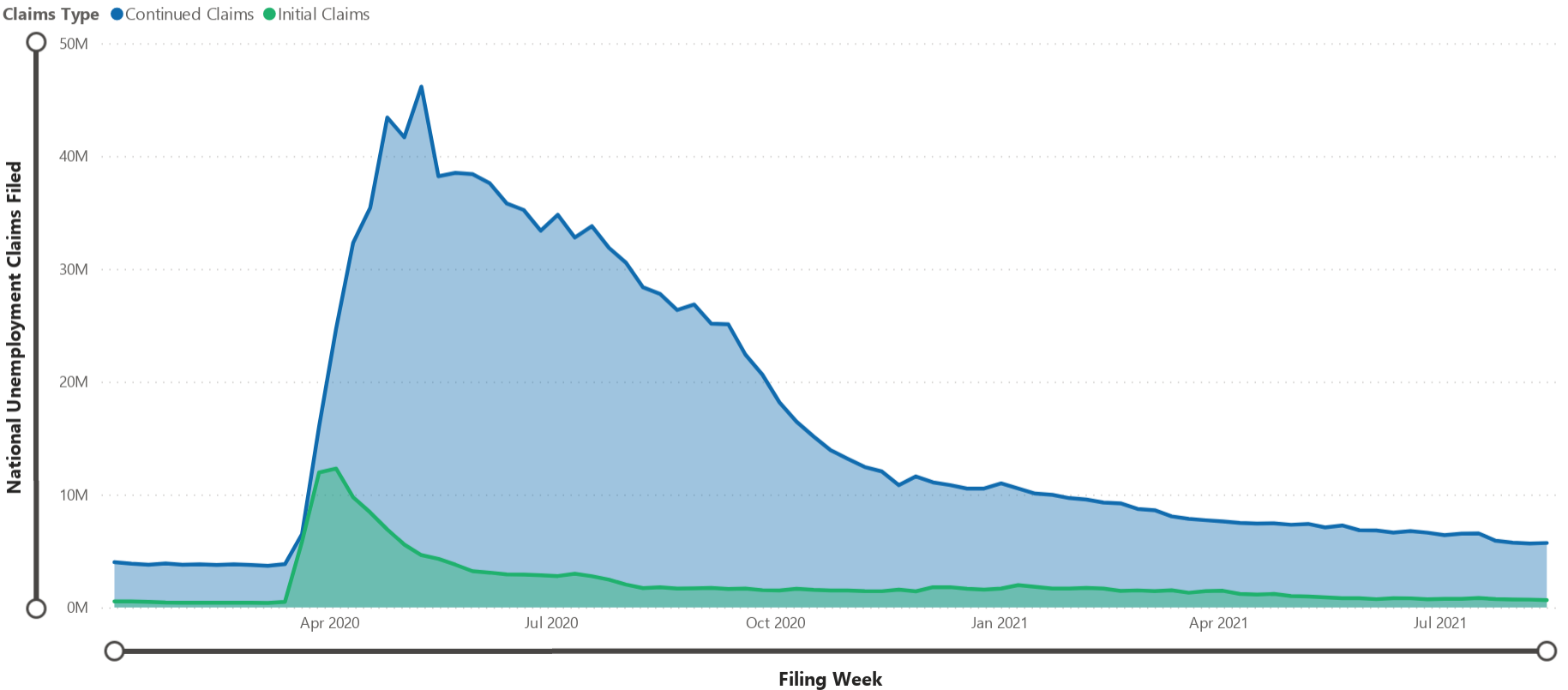
MoM%

August 2020    Septe... 2020    Octo... 2020    Nove... 2020    Dece... 2020    Janua... 2021    Febru... 2021    March 2021    April 2021    May 2021    June 2021    July 2021

August 2020    Septe... 2020    Octo... 2020    Nove... 2020    Dece... 2020    Janua... 2021    Febru... 2021    March 2021    April 2021    May 2021    June 2021    July 2021

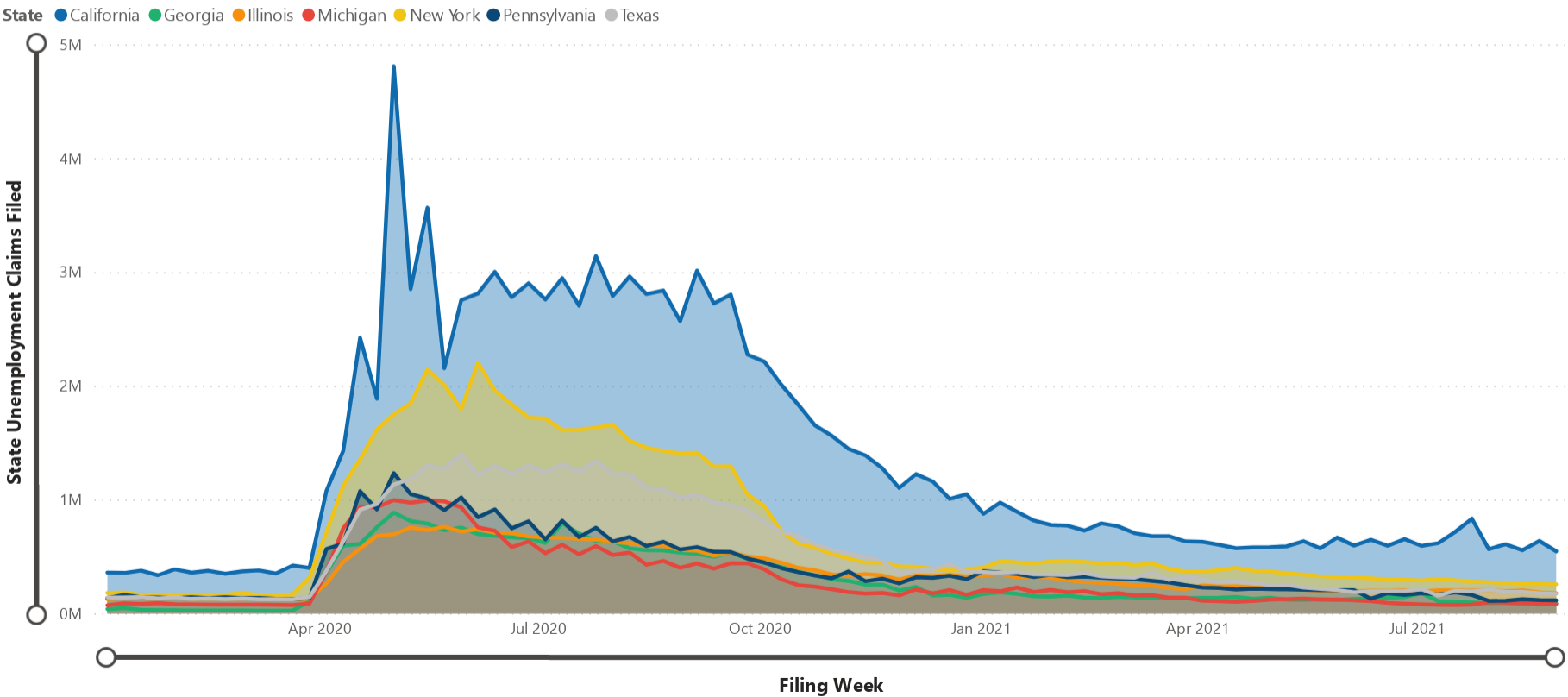
# Weekly National Unemployment Claims - Source: Department of Labor

The Department of Labor (DOL) reports [unemployment claims](#) weekly at a national and state level. The following graph show the national initial and continued claims by week.



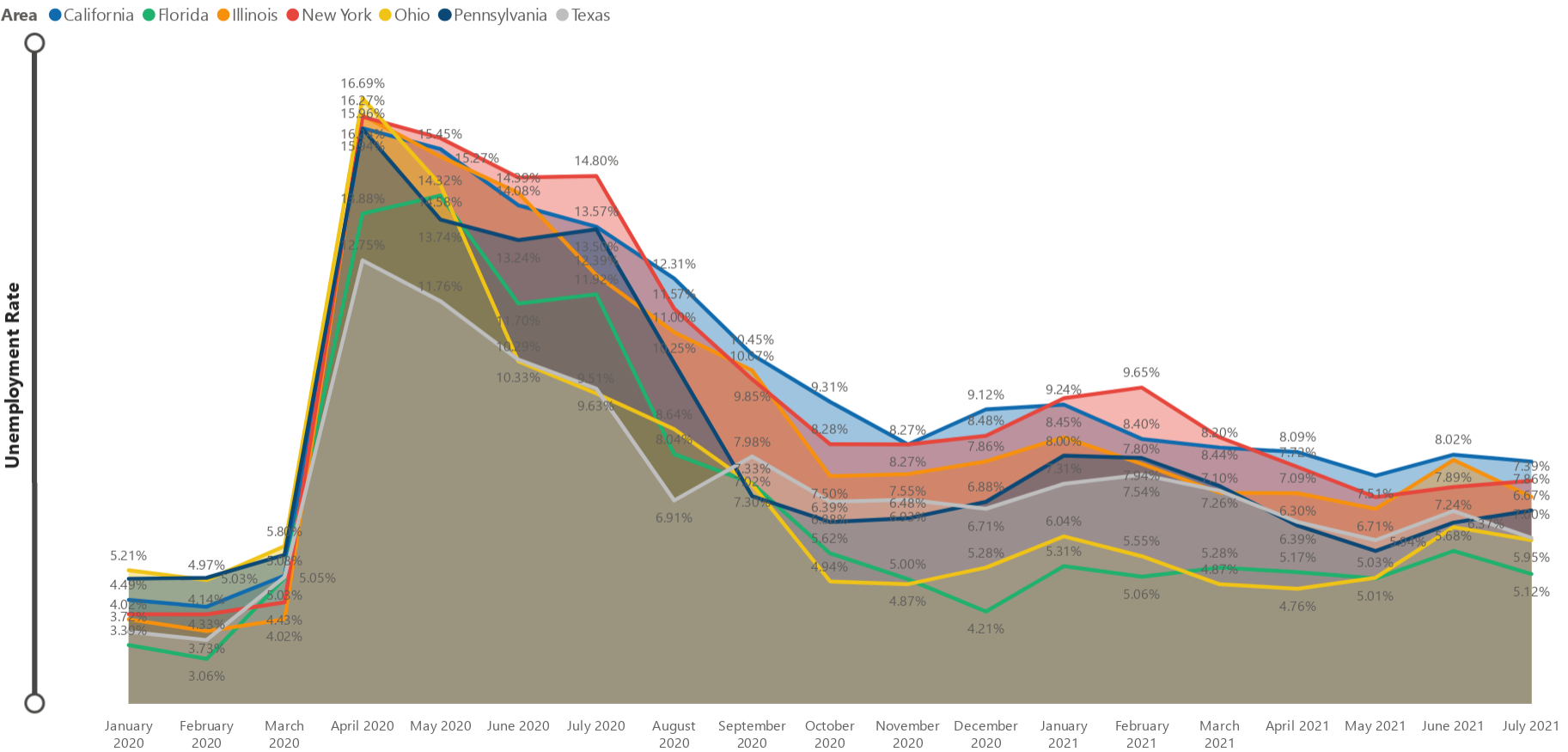
# Weekly State Unemployment Claims (Top 7) - Source: Department of Labor

The following graph shows the continued unemployment claims for selected states (highest 5) for the selected dates.



Unemployment Rate Trends for Selected States (Top 7) - Source: Bureau of Labor Statistics (BLS)

 PUBLIC INSIGHT™



# Unemployment Rate Trends for Selected Metros (Top 7) - Source: Bureau of Labor Statistics

